



Bottom Cover Removal Warning

Do not remove any cover(s) and /or screw(s) for the purposes of device upgrade as this may violate the terms of your warranty.

If you need to replace/remove the hard disk/RAM/optical device etc., for any reason, please contact your distributor/supplier for further information.

Removing the Battery

We recommend that you do not remove the battery yourself. If you do need to remove the battery for any reason (e.g. long term storage) see below.

1. Turn the computer **off**, and turn it over.
2. Slide the latch **1** in the direction of the arrow.
3. Slide the latch **2** in the direction of the arrow, and hold it in place.
4. Lift the battery **4** out in the direction of the arrow from point **3**.

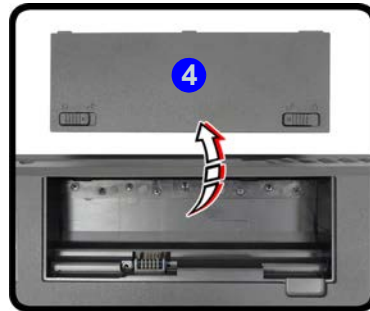
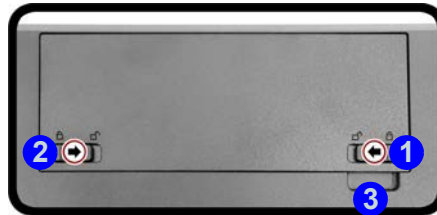


Figure 3 - 16
Battery Removal

Inserting the Battery

1. Turn the computer **off**, and turn it over.
2. Slide the battery into the compartment in the direction of the arrow ①.
3. Slide the latches ② (latch ② should lock automatically) and ③ in the direction of the arrows to lock the battery.

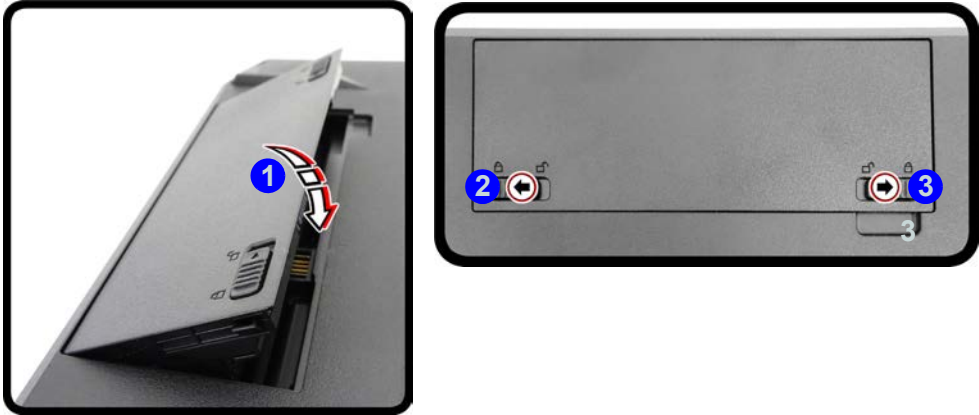


Figure 3 - 17
Battery Insertion